

KU LEUVEN



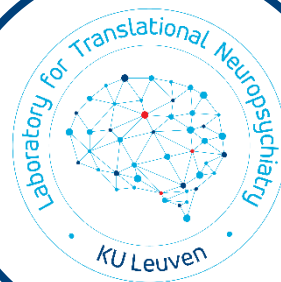
KU Leuven

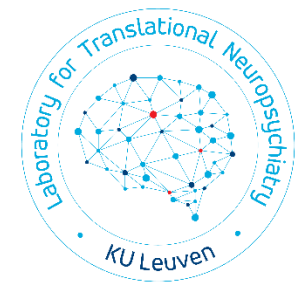
Biomedical Sciences Group

Department of Neurosciences

Research Group Psychiatry

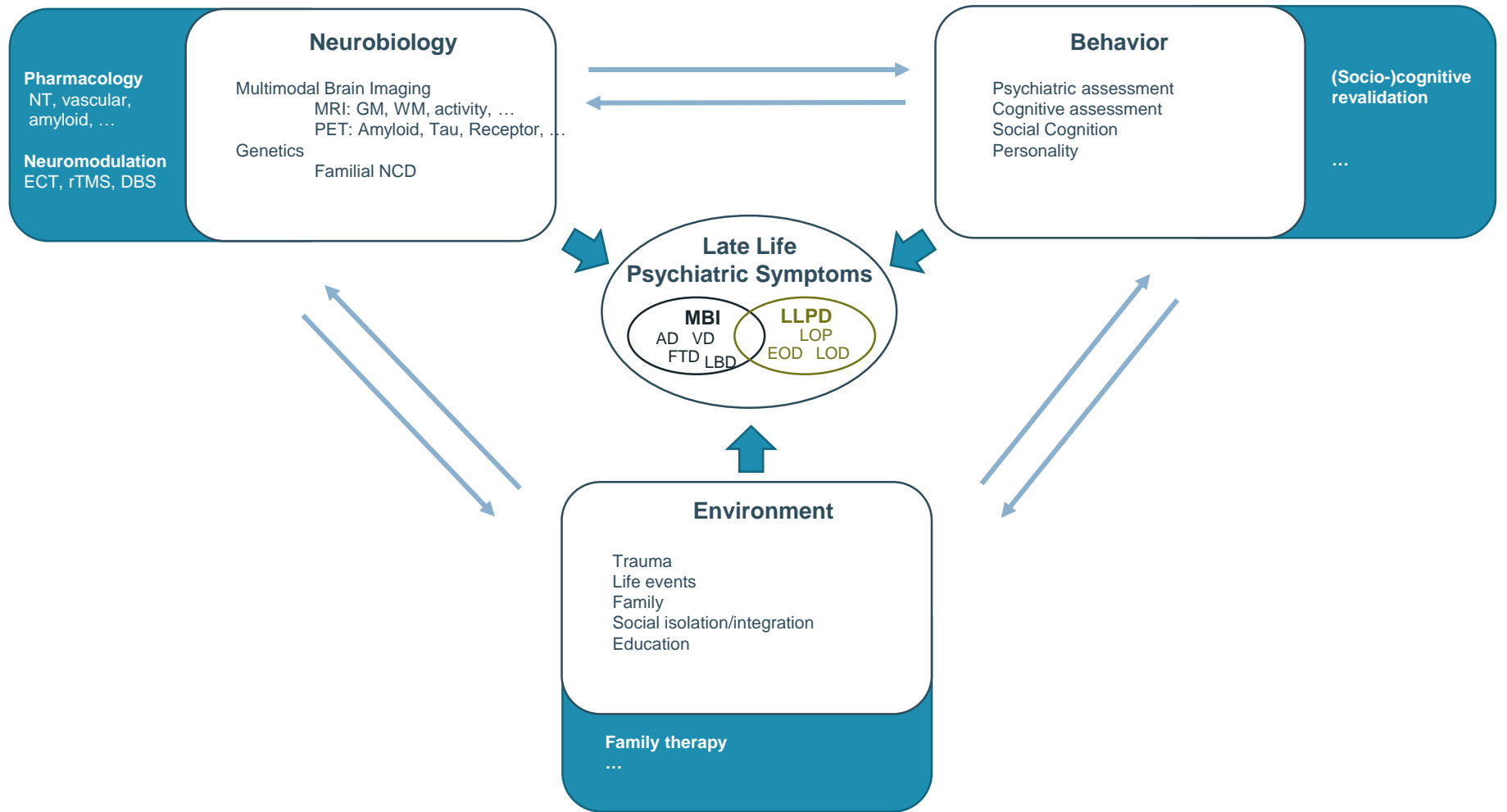
Center for Neuropsychiatry





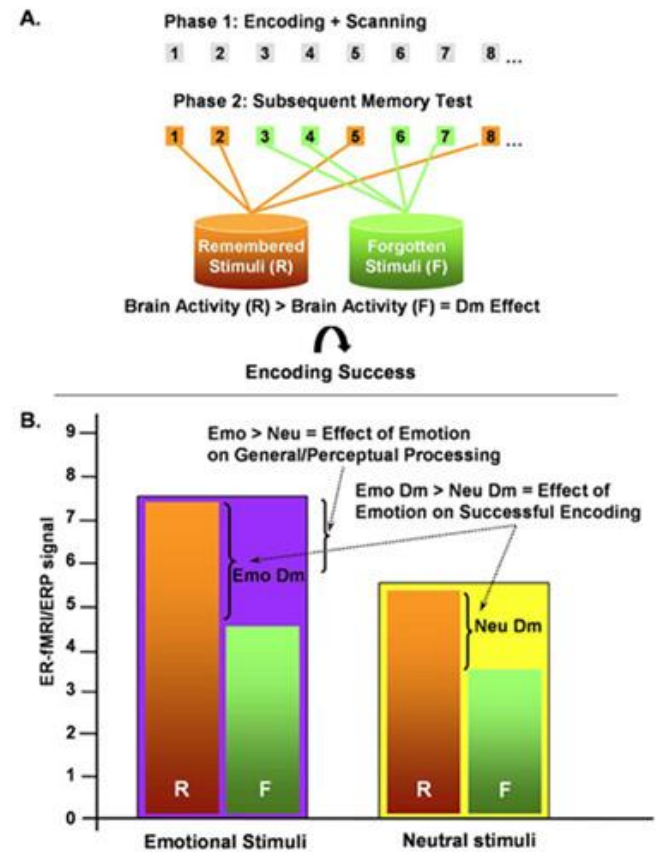
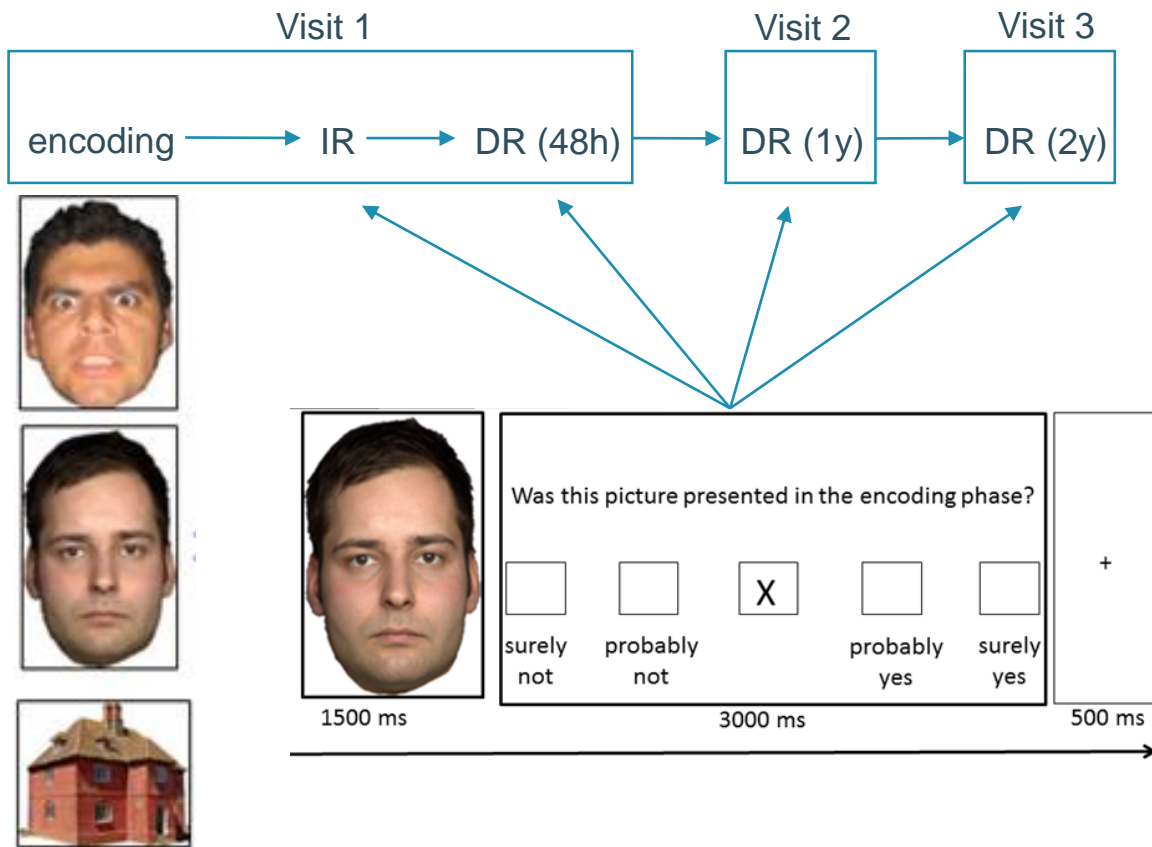
- Mission:

- 1) Understanding the **pathogenesis** of late life psychiatric symptoms, especially the interplay between neurobiological, psychological and social factors
- 2) Developing **diagnostic tools** for late life psychiatric syndromes
- 3) Improving **treatment**: developing multidimensional treatments, understanding the working mechanisms of existing treatments, identifying prognostic factors, ...



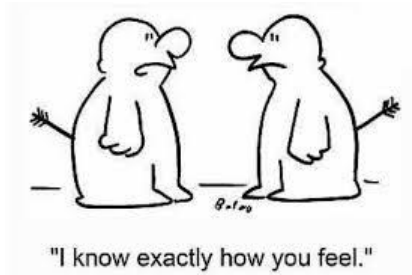
Ongoing projects: PESA-study

- Functional brain changes underlying emotion processing presymptomatic carriers of pathogenic mutations of neurodegenerative disorders (*PESA; collaboration P. Van Damme, K. Van Laere*)
 - - presymptomatic *C9orf72* – mutations
 - - longitudinal 2-year, 3 visits
 - - behavioral assessment (psychiatric, cognitive, psychophysics)
 - - *MRI/FDG-PET*
 - - *fMRI: subsequent memory paradigm*

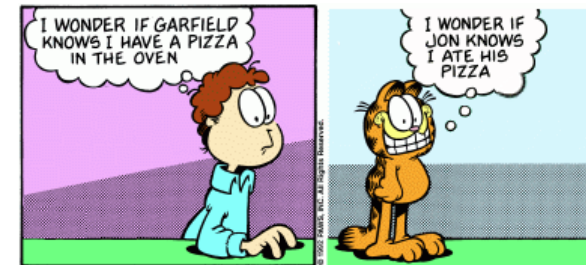


Ongoing projects: SOCOS

- Construction of diagnostic tools for social cognition assesement



- Emotion expression
- Emotion recognition
- Theory of mind
- Empathy
- Prosocial behavior
- ...



Ongoing projects: Amyloid imaging in late life depression

No Association of Lower Hippocampal Volume With Alzheimer's Disease Pathology in Late-Life Depression

François-Laurent De Winter, M.D., Louise Emsell, Ph.D., Filip Bouckaert, M.D., Lene Claes, M.Sc., Saurabh Jain, M.Sc., Gill Farrar, Ph.D., Thibo Billiet, Ph.D., Stephan Evers, M.Sc., Jan Van den Stock, Ph.D., Pascal Sienaert, M.D., Ph.D., Jasmien Obbels, M.Sc., Stefan Sunaert, M.D., Ph.D., Katarzyna Adamczuk, Ph.D., Rik Vandenberghe, M.D., Ph.D., Koen Van Laere, M.D., Ph.D., Mathieu Vandenbulcke, M.D., Ph.D.

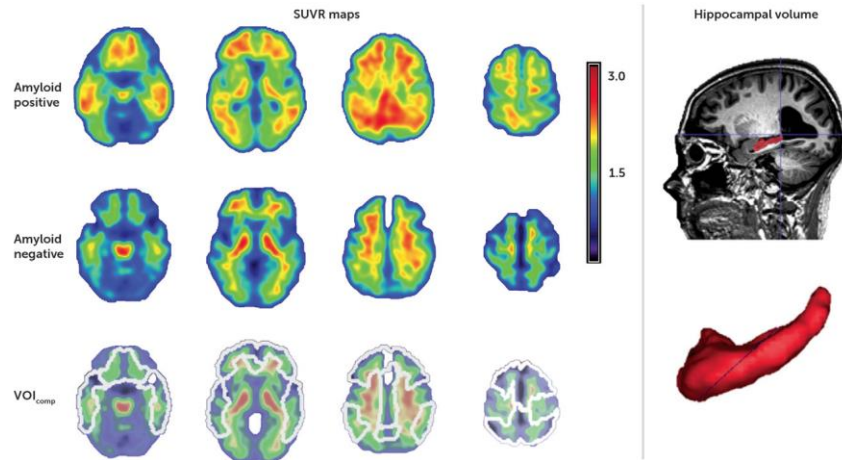
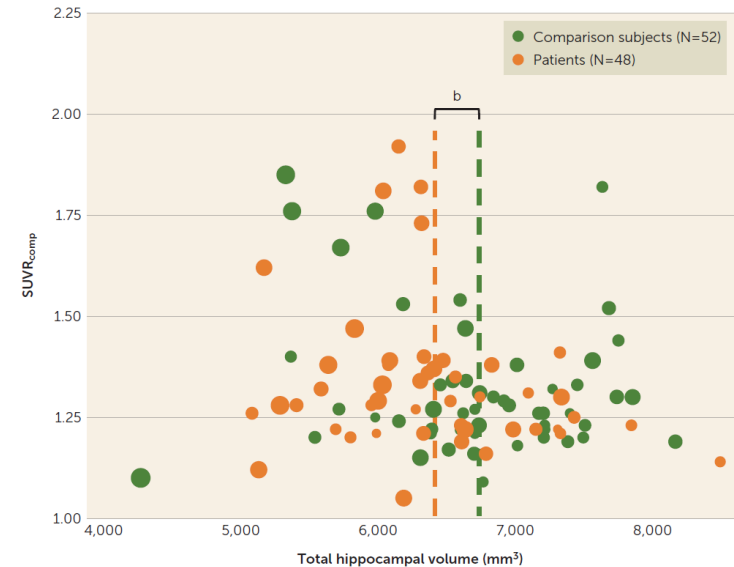
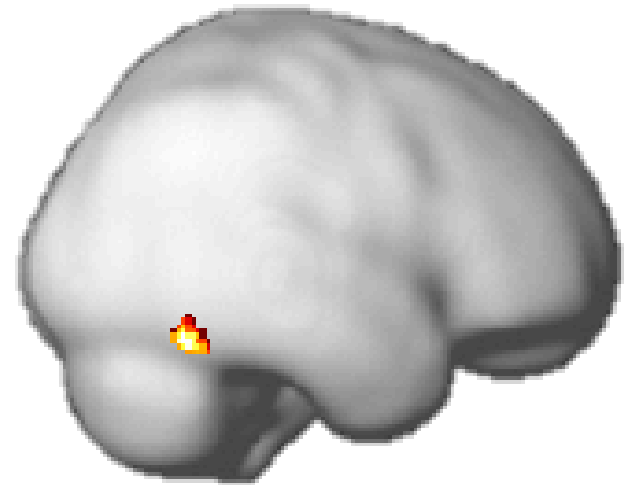


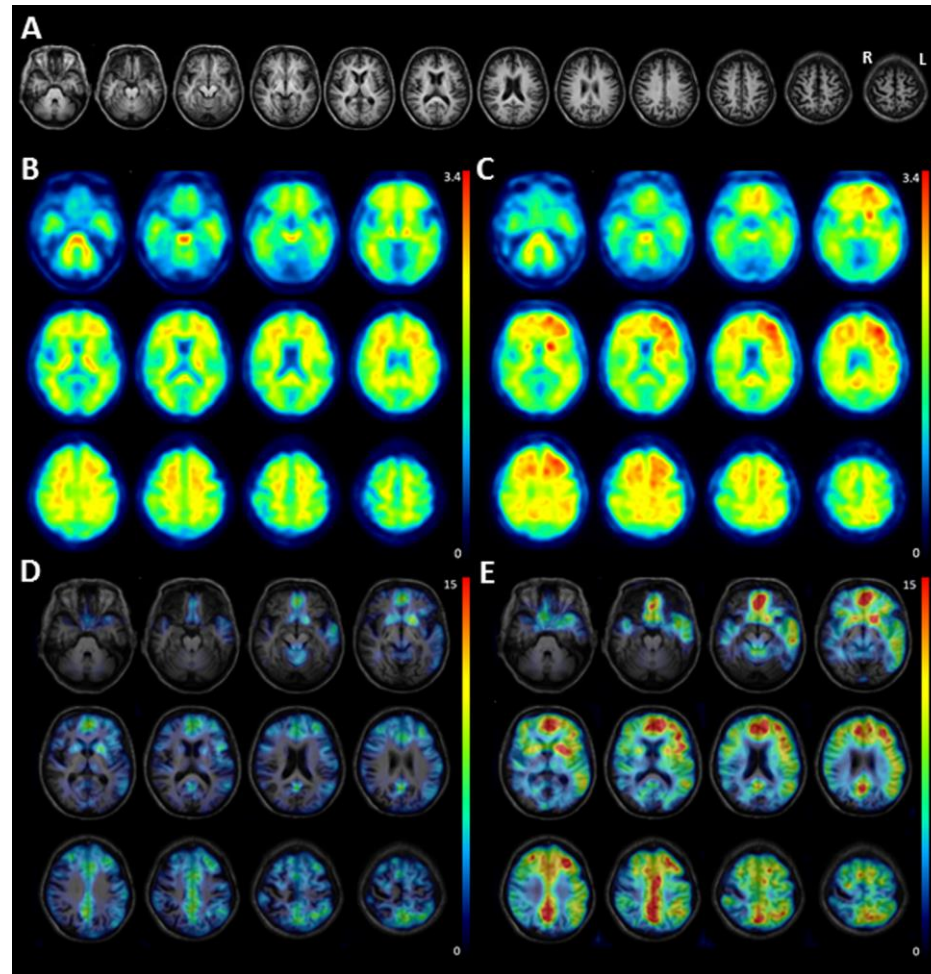
FIGURE 4. Correlation Between Total Hippocampal Volume and Amyloid Deposition in Comparison Subjects and Patients With Late-Life Depression^a



Ongoing projects: Behavioral and neural correlates of prosopagnosia



Ongoing projects: working mechanisms of ECT



Overview

- The role of PET-MRI neuroimaging in the differential diagnosis of late-life depression and Alzheimer's Disease (dr. Louise Emsell)
- De hersenbasis van emotionele veranderingen in FTD (dr. François-Laurent De Winter)
- De psychologie en neurobiologie van laat ontstane psychose (mevr. Lies Van Assche)
- De invloed van temporale pool resectie op het emotionele brein (dr. Laura Van de Vliet)